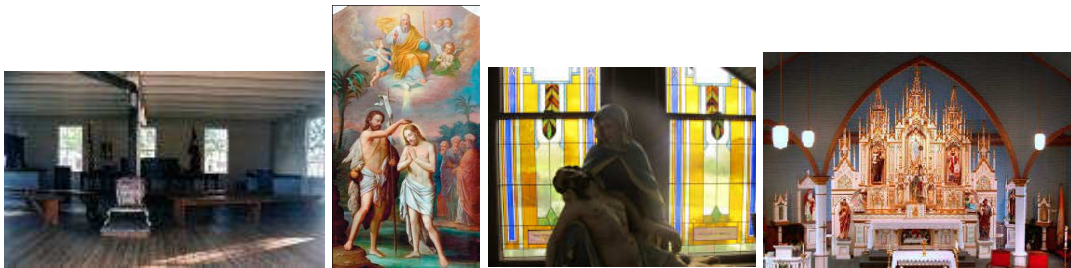


RURAL TEXAS TOURISM LLC

RURAL TEXAS TOURISM LLC

cc@cvctx.com www.ruraltexasart.com 979-561-6667

czechs, churches, and cherished moments of fayetteville



JOURNEY ON A DAY TRIP WITH A 5TH GENERATION STEP ON GUIDE TO FABULOUS FAYETTEVILLE:

- *VISIT THE 1880 COURTHOUSE ON THE SQUARE AND/OR THE FAYETTEVILLE HERITAGE MUSEUM WITH RELICS OF PAST GENERATIONS*
- *EXPERIENCE TWO INCREDIBLE CHURCHES:
ST. JOHN THE BAPTIST—WITH PAINTINGS BY IGNAZ BERGER
ST. MARY'S OF ELLINGER—OLDEST CHURCH IN THE AREA*
- *WALK THE HISTORICAL SQUARE AND LEARN THE HISTORY AND TRIALS OF EARLY SETTLERS*
- *CAPTURE THE COMMUNITY SPIRIT BY DINING AT A LOCAL RESTAURANT*
- *VIEW WORKS OF ART BY LOCAL CELEBRATED ARTISTS*

